



Ansenke(Shenzhen) Electronics CO.,LTD

WhatsApp:+86-15376897116 Email:sales@askdisplay.com



安森克
ANSINKE

PART NO: TPL070

ISSUED DATE: 2025-11-25

Proposed by			Customers' Approval
Designed by	Checked by	Approved by	



Ansenke(Shenzhen) Electronics CO.,LTD

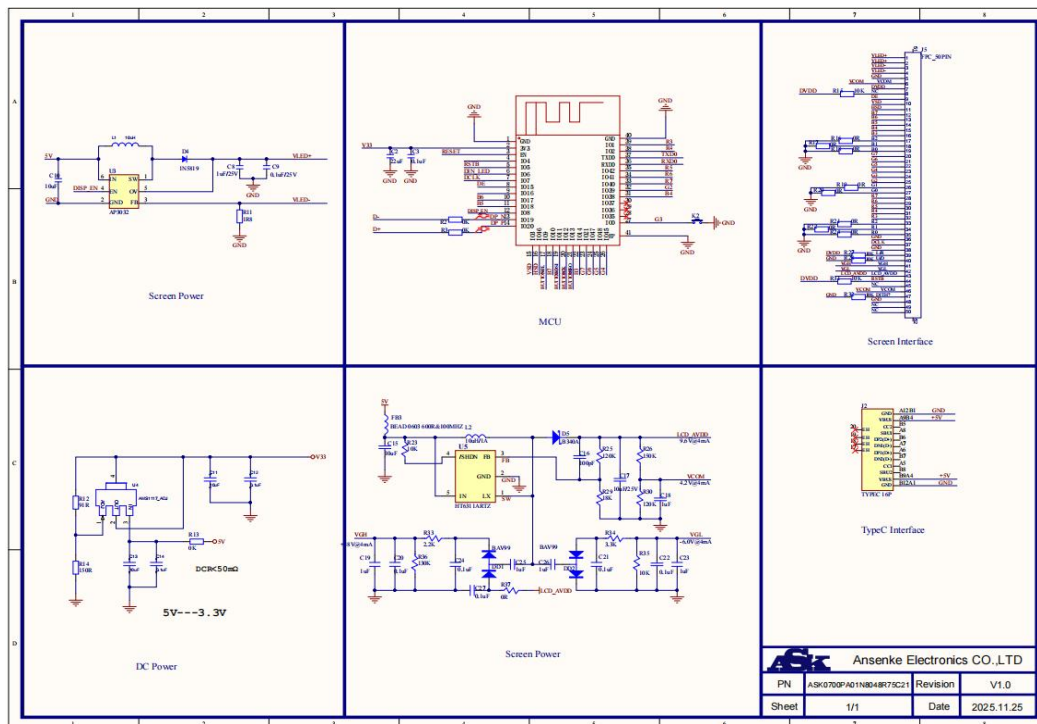
WhatsApp:+86-15376897116 Email:sales@askdisplay.com

1. Appearance



2. Schematic and PCB Diagram

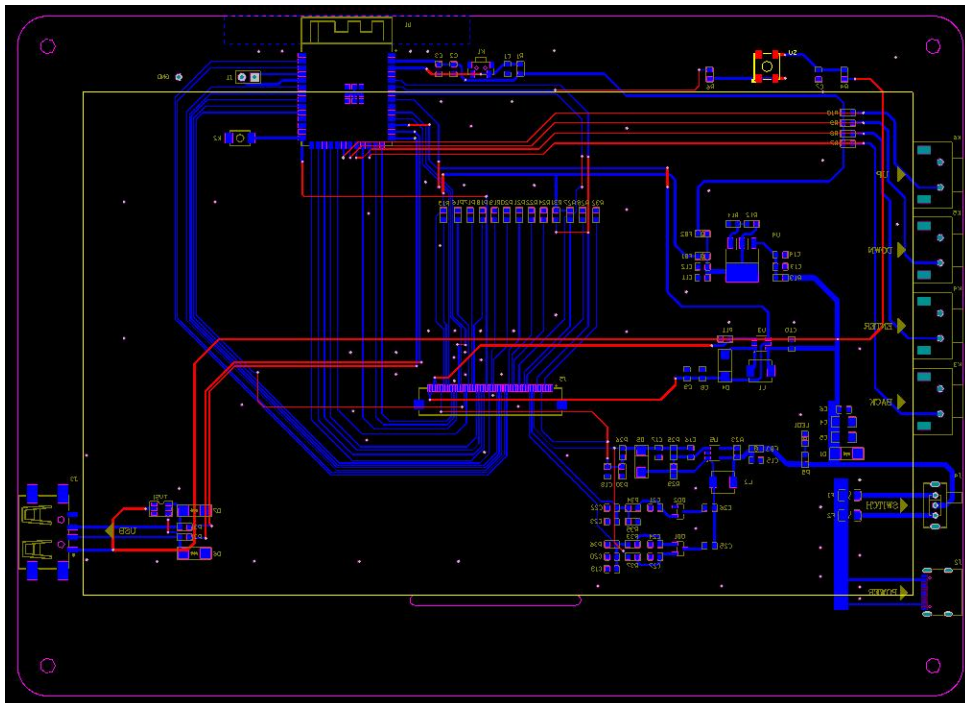
2.1 Schematic Diagram



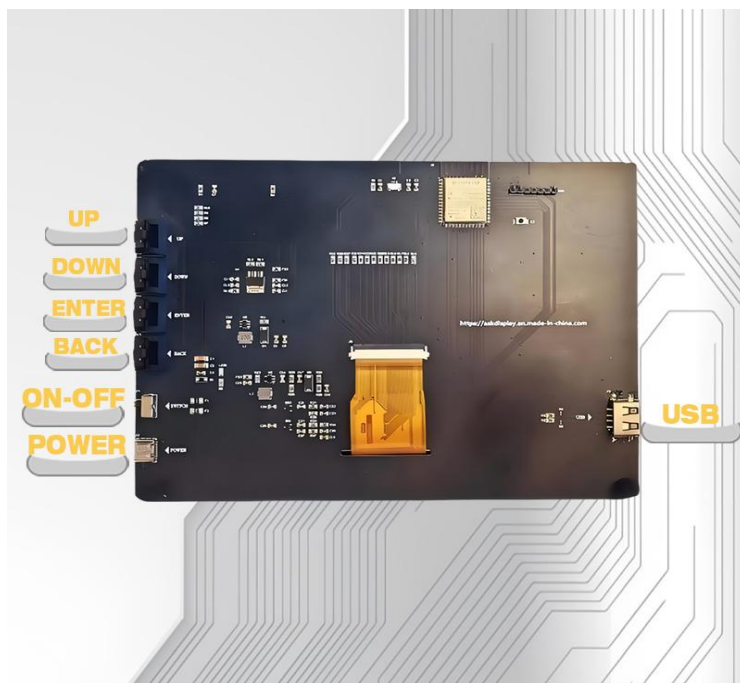
The information contained herein is the exclusive property of Ansenke Electronics, and shall not be distributed, reproduced, or disclosed in whole or in part without prior written permission of Ansenke(Shenzhen) Electronics CO.,LTD.



2.2 PCB diagram



3. Functional Interface diagram



The information contained herein is the exclusive property of Ansenke Electronics, and shall not be distributed, reproduced, or disclosed in whole or in part without prior written permission of Ansenke(Shenzhen) Electronics CO.,LTD.

**5. Technical Specification**

Display	Display Type	7inch
	Type	TFT
	Resolution	800*480
	Backlight type	White LED
	Dimensions	165(W)×100(H)×3.5(D)
	Active area	153.84(H)×85.632(V)
	View angles	All
I/O Port	USB	USB 2.0×1
Button	UP	Move upward
	DOWN	Move downward
	ENTER	Confirm function
	Back	Return to the previous
Power supply	Typec interface	DC 5V
Environment	Operating Temp	-20~70℃
	Storage Temp	-30~80℃
Physical	Machine size	200(mm)×150(mm)×90(mm)
Characteristics	Machine weight(g)	752.7g



6. Technical Drawings of the inner EPD panel

