



Ansenke(Shenzhen) Electronics CO.,LTD

WhatsApp:+86-15376897116 Email:sales@askdisplay.com



安森克
ANSINKE

PART NO: EPL133

ISSUED DATE: 2025-11-25

Proposed by			Customers' Approval
Designed by	Checked by	Approved by	



Ansenke(Shenzhen) Electronics CO.,LTD

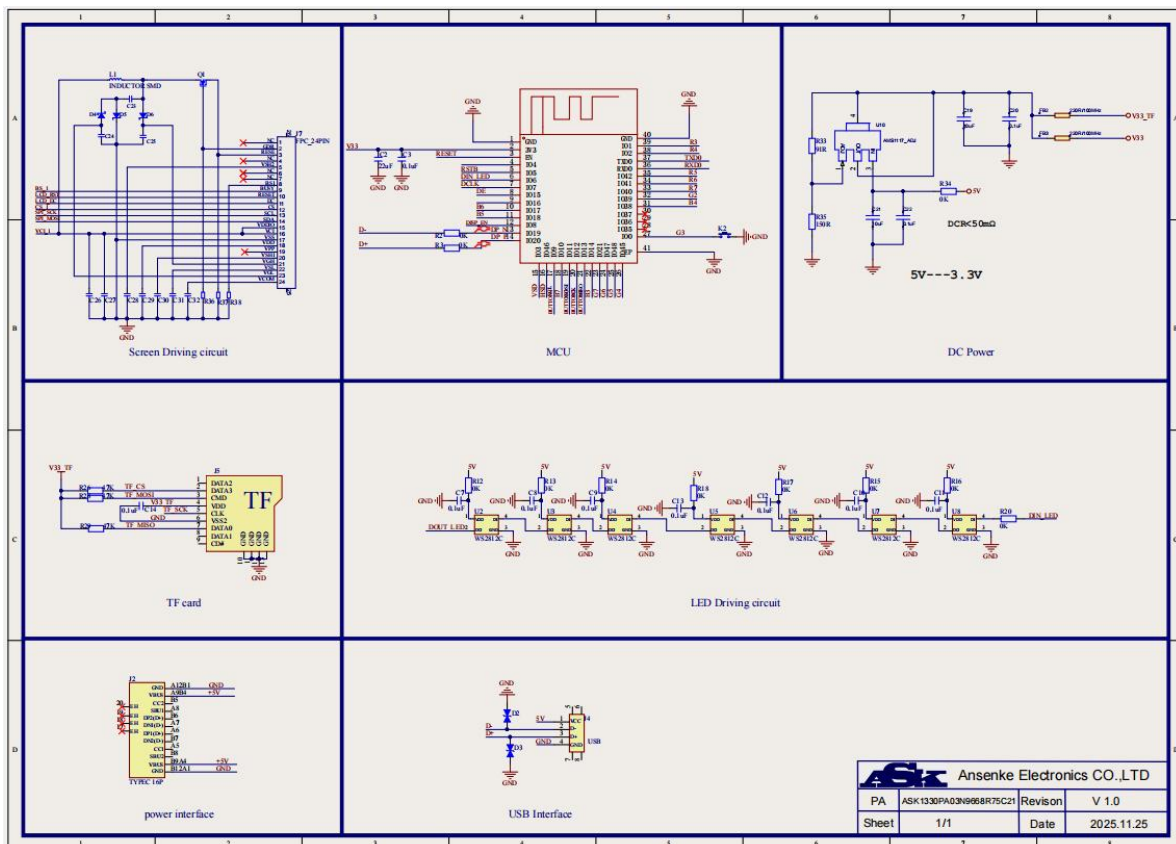
WhatsApp:+86-15376897116 Email:sales@askdisplay.com

1. Appearance



2. Schematic and PCB Diagram

2.1 Schematic Diagram



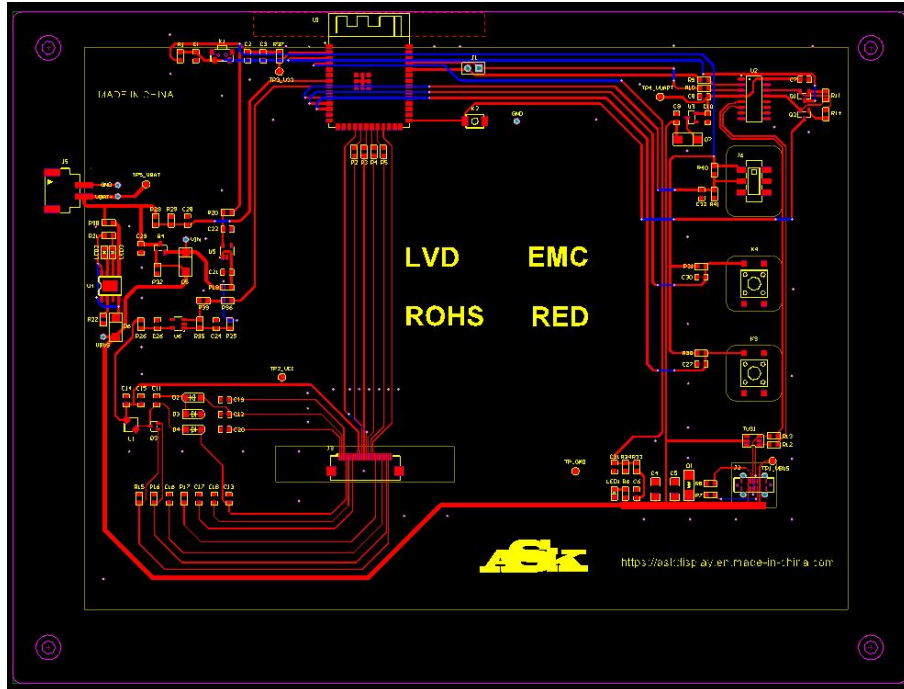
The information contained herein is the exclusive property of Ansenke Electronics, and shall not be distributed, reproduced, or disclosed in whole or in part without prior written permission of Ansenke(Shenzhen) Electronics CO.,LTD.



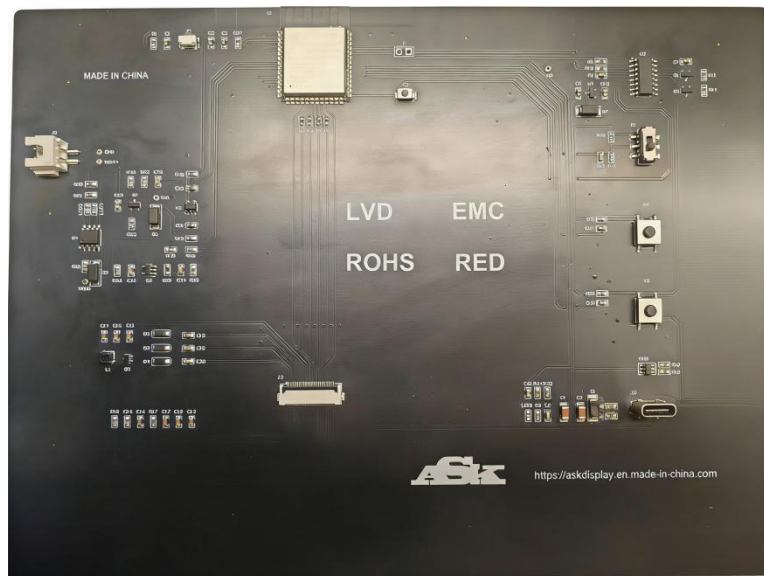
Ansenke(Shenzhen) Electronics CO.,LTD

WhatsApp:+86-15376897116 Email:sales@askdisplay.com

2.2 PCB diagram

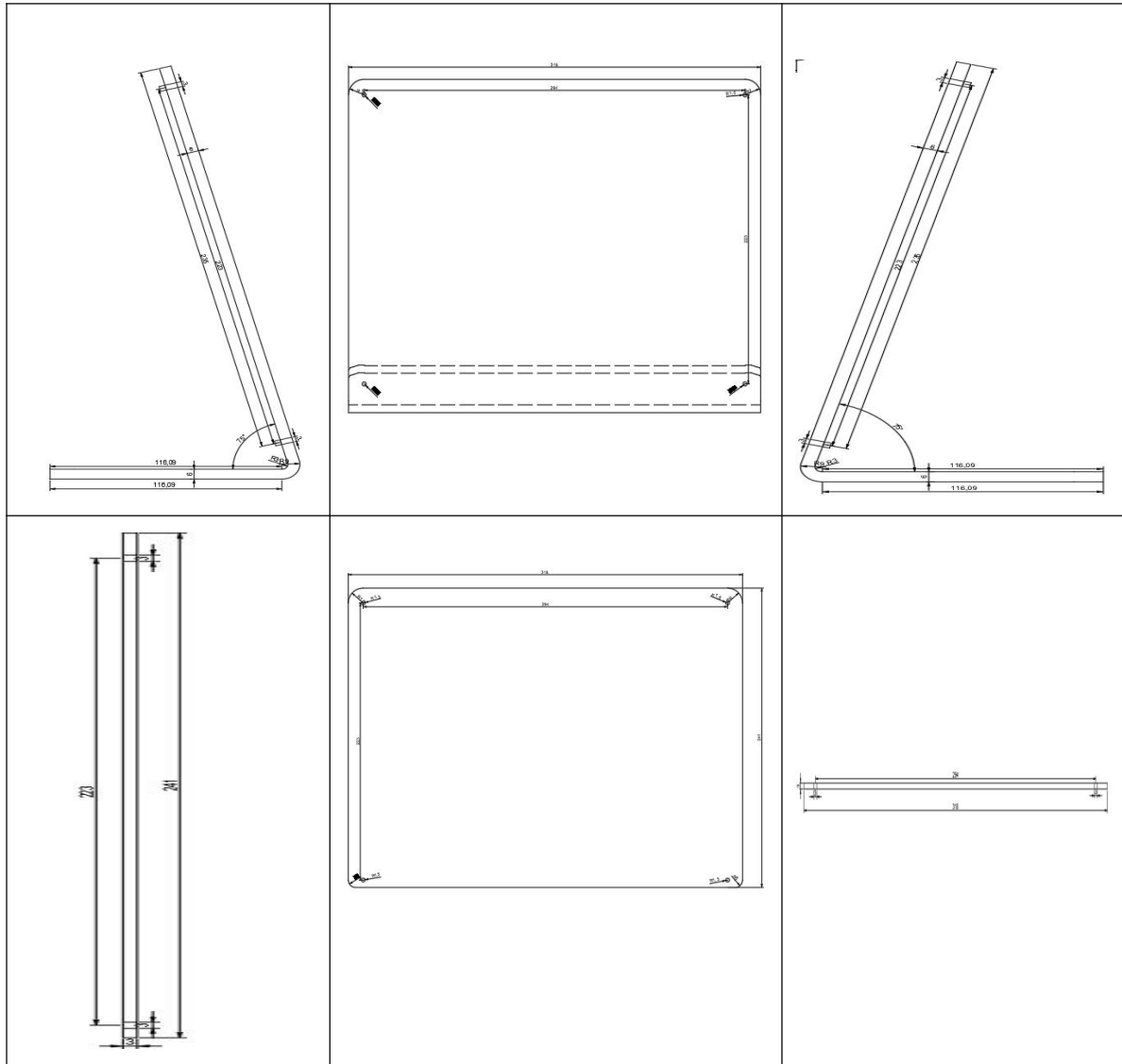


3. Functional Interface diagram





4. Outline Dimension



**5. Technical Specification**

Display	Display Type	13.3inch
	Type	EPD
	Resolution	960*680
	Pixel Pitch	0.287(mm)*0.287(mm)
	Dimensions	286.32(W)×232.26(H)×1.126(D)
	Active area	275.52(H)×195.16(V)
	View angles	All
I/O Port	USB	USB 2.0×1
Button	UP	Move upward
	DOWN	Move downward
	ENTER	Confirm function
	Back	Return to the previous
Power supply	Typec interface	DC 5V
Environment	Operating Temp	0~50°C
	Storage Temp	-25~60°C
Physical Characteristics	Machine size(mm)	318×250×125 mm
	Machine weight(g)	1760.6g

